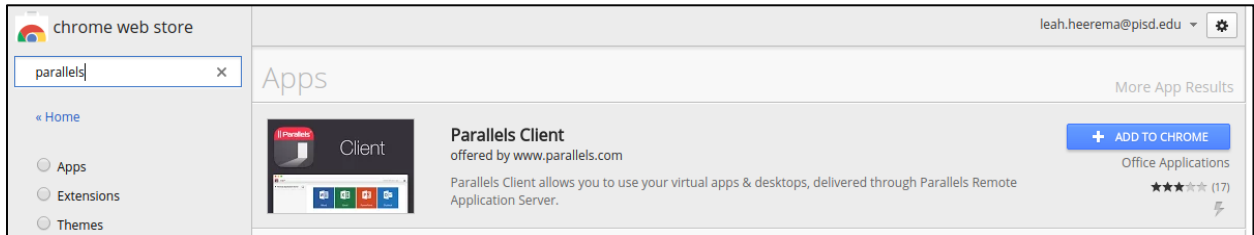

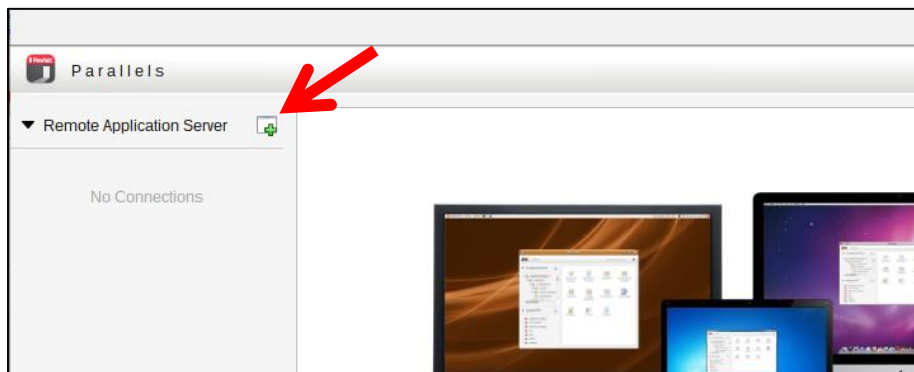


Remote Access from a Chromebook

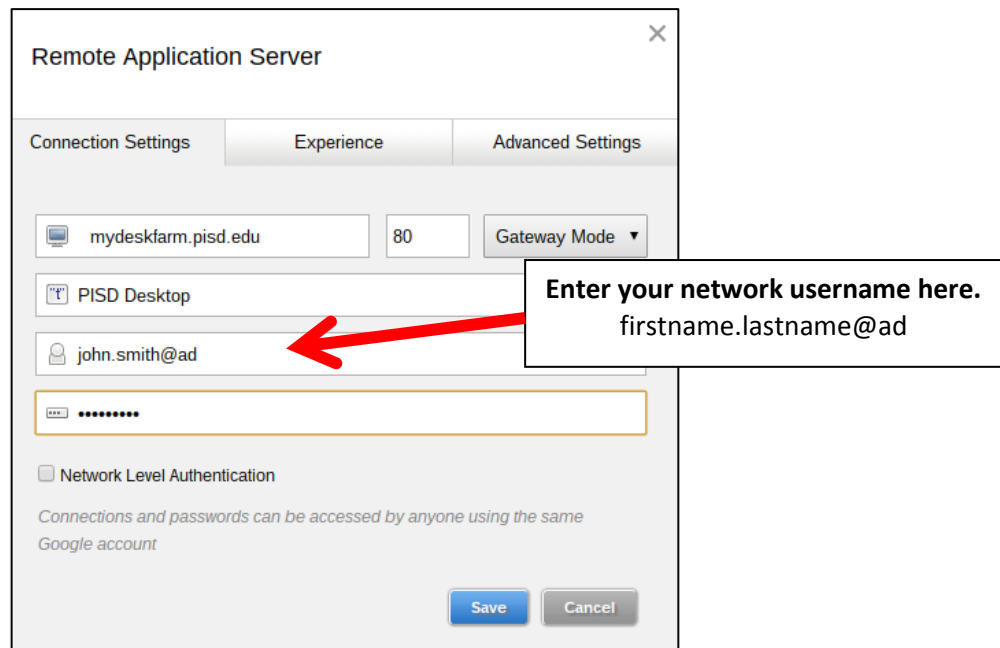
1. On your Chromebook go to the Chrome Web Store.
2. Search for the Parallels Client app and click the Add to Chrome button.



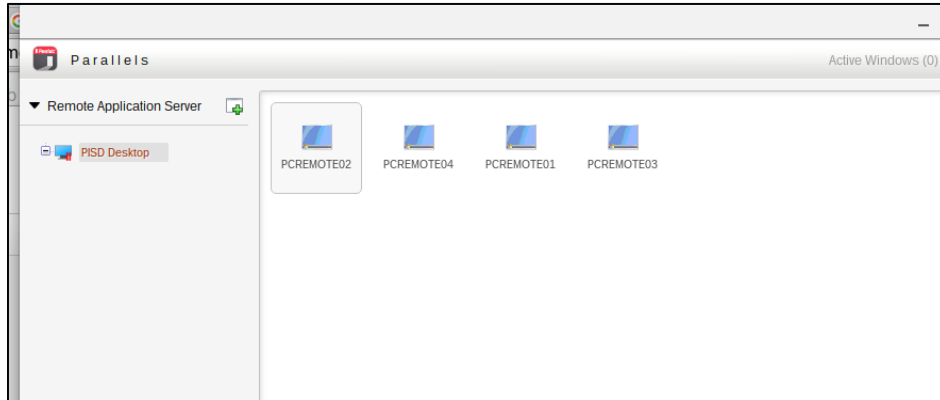
3. Launch the Parallels app.
4. When the client opens, click on the green + on the left of screen  to add a Remote Application Server.



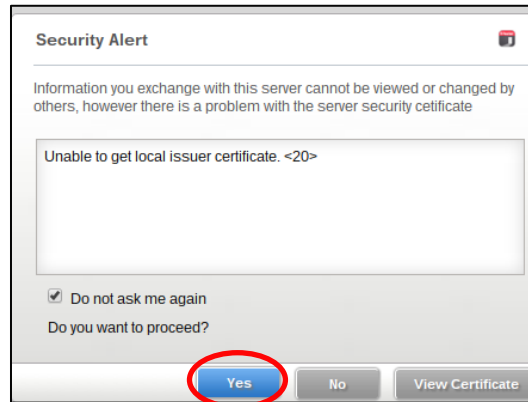
5. Enter the following information into the server settings, then click **Save**.



6. You will see a list of available remote desktops to connect to. Double-click on one of them.



7. If you see this message, just click Yes.



8. You should now be connected to your desktop remotely!