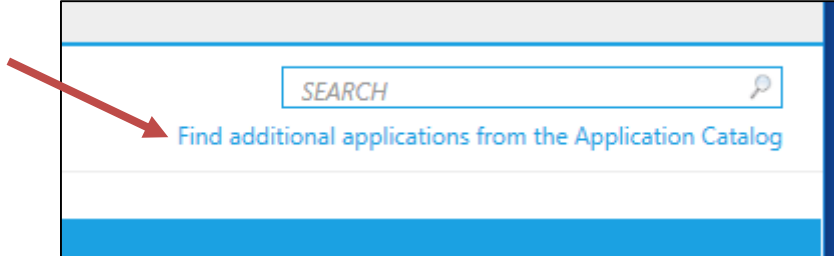


TI Connect Version 5.2 Installation Instructions

1. Open the App Depot.



2. Click "Find additional applications from the Application Catalog".



You will need to use the **Internet Explorer** browser  in order to view the catalog.

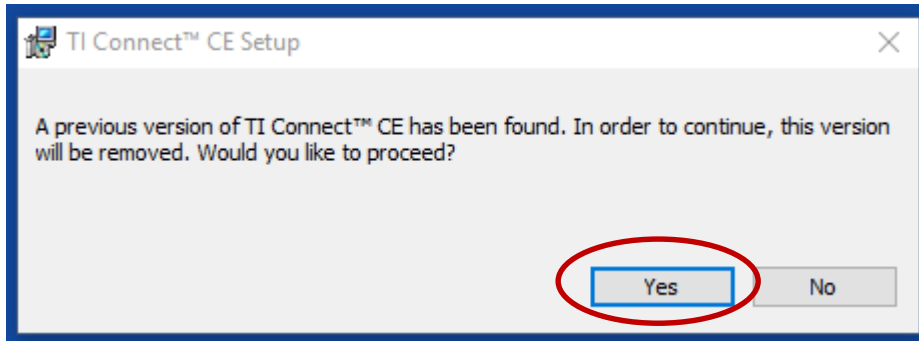
3. Search for **TI** and click on **TI Connect CE 5.2.0.51**. Click on **Install**.

A screenshot of a web browser window showing the "Application Catalog" search results. The browser address bar shows "http://configmgr01.ad.pisd.edu/CMApplic". The page title is "Application Catalog". The search results table has the following data:

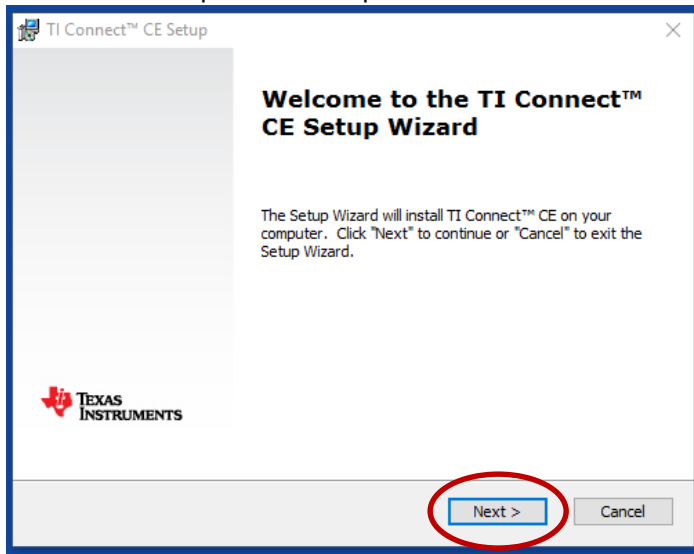
NAME	VERSION	PUBLISHER	CATEGORY	REQUIRES APPROVAL
TI Connect 5.0.0.182	5.0.0.182		Classroom Tools	No
TI Connect™ CE 5.2.0.51				No

A red arrow points to the "TI Connect™ CE 5.2.0.51" row. Below the table, there is a card for "TI Connect™ CE 5.2.0.51" with the text "No description available" and a "More Details" link. A blue "INSTALL" button is circled in red. The footer of the page includes "Plano ISD", navigation links "First Prev 1 Next Last", and "Microsoft System Center Configuration Manager".

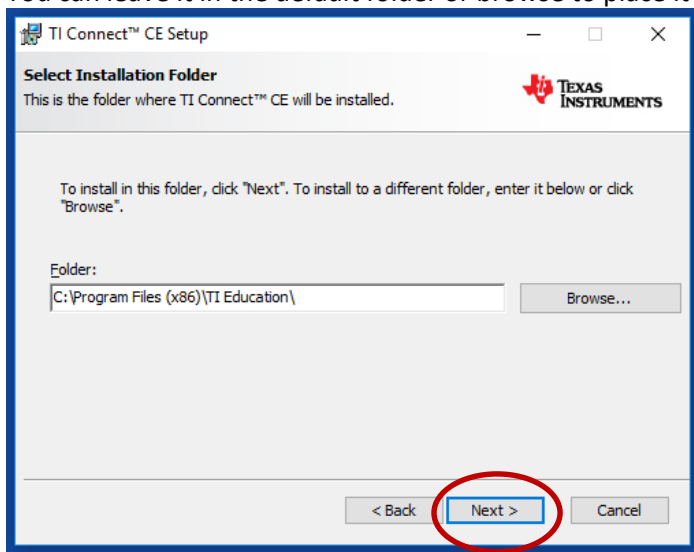
4. If you receive the message to replace a previous version of TI Connect, click **Yes** to accept it.

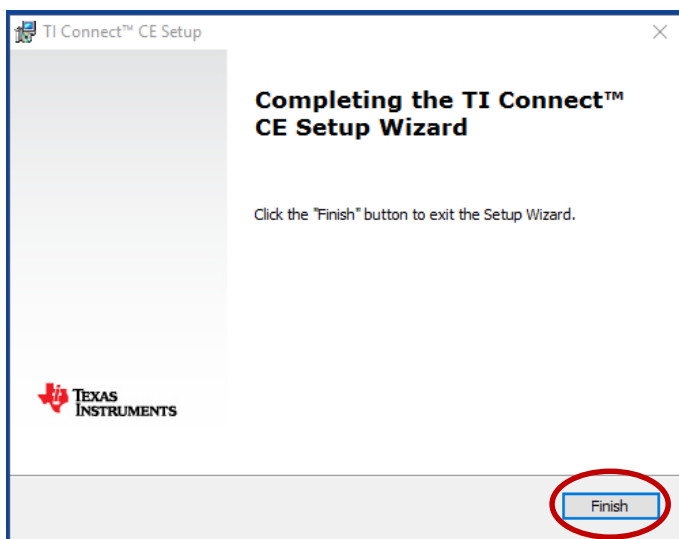
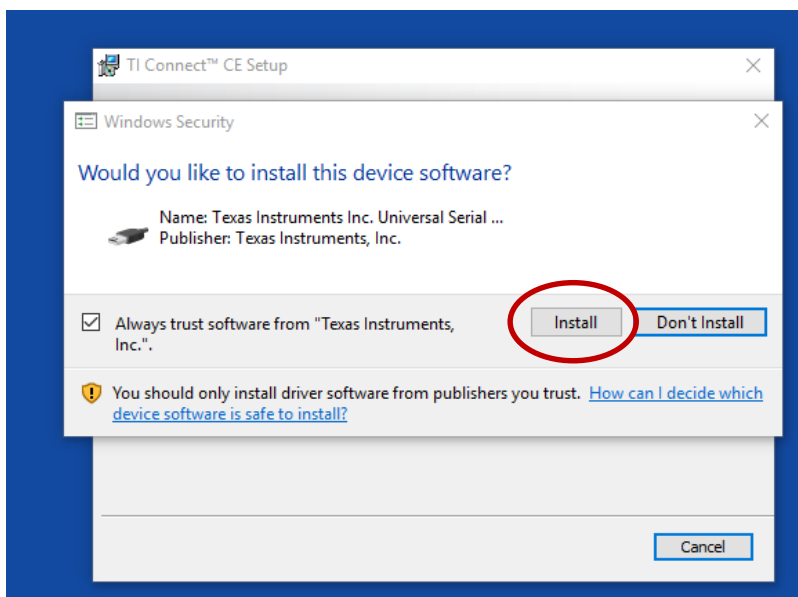
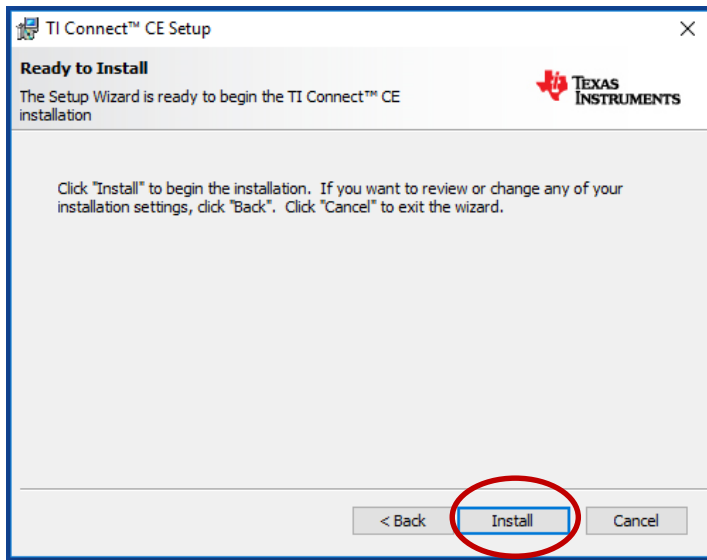


5. Follow these steps in the Setup Wizard.

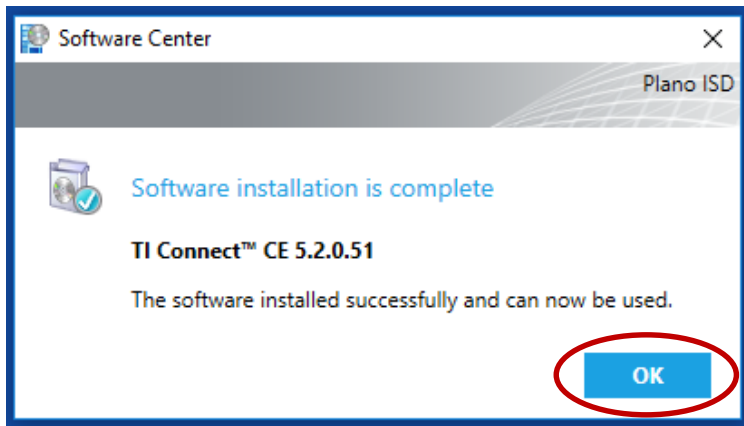


You can leave it in the default folder or browse to place it wherever you'd like. For example, on your Desktop.

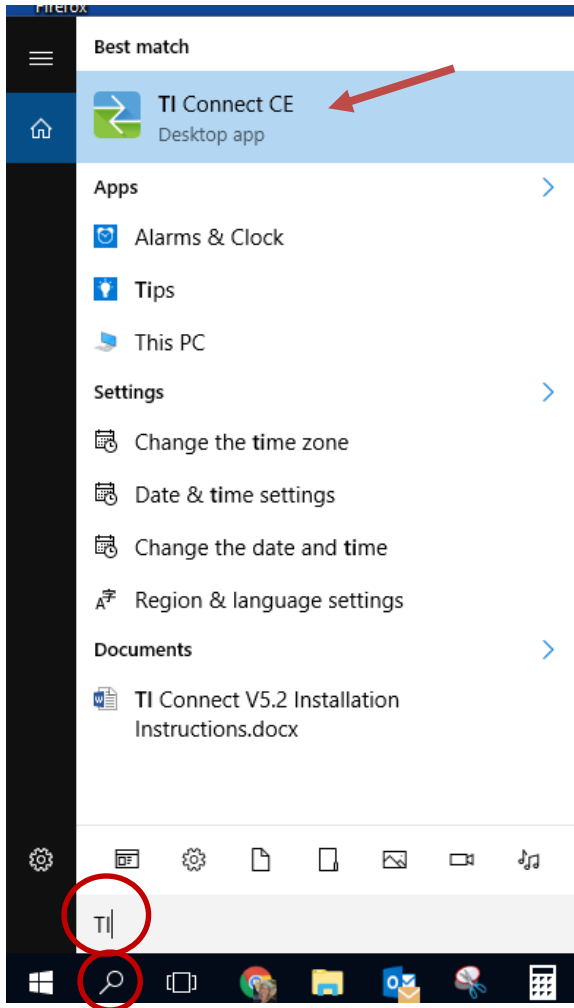




When the installation is complete, you will see this message. Click **OK**.



6. Search Windows 10 for “TI” to find it.



7. In Windows 10, you can right-click it from here and pin it to your taskbar for quicker access in the future.

